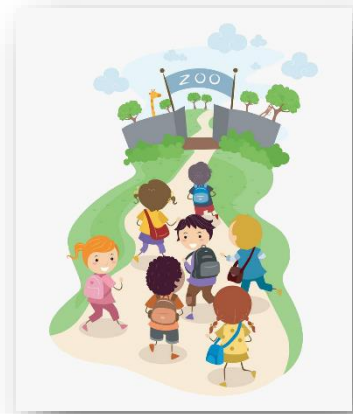


Educational Visits

From time to time, pupils undertake educational visits off the school premises as part of the normal school curriculum. On such occasions, pupils are always fully supervised by teachers and care is exercised in the same way as if the pupils were in school.



Staff undertake pre-visits and undertake detailed risk assessments before each visit. Most of the visits are of a routine nature or are locally-based, for these parents give a general consent when completing the School Admissions Booklet.

For more lengthy journeys involving perhaps absence outside school hours or where there is likely to be particular risks, specific consent will be sought before a pupil can participate.

When the children move into the Junior classes they have the opportunity to take part in a residential visit which involves an overnight stay of varying lengths.

The residential visits have been designed to suit the age and developmental stage of the children involved and also build up the number of nights they are away from home which therefore helps to build their confidence too.

Residential visits

Year 3: Day visit / sleepover for one night at school

Year 4: Eden Project/ one night at the YHA sleeping pods

Year 5: Porthpean Camping for 2 nights

Year 6: London trip / 3 nights at YHA