



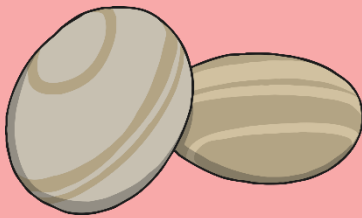
Invertebrate Hunt

If you have any outside space at home,
have a go at this activity.
what can you find?

Invertebrates in the Local Environment

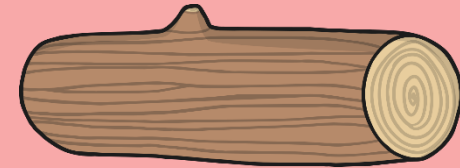


Invertebrates often inhabit small homes called microhabitats.
Here are some different microhabitats you might find.



Under stones and rocks

In short grass



Inside or under rotting wood



Under fallen leaves

In and on soil



In tall flowers and grasses

Can you think of any more?

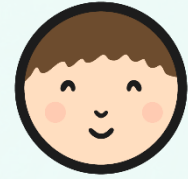
Classification



Invertebrates are so small, so they must be handled very carefully.
How can we observe and capture specimens without causing them any harm?

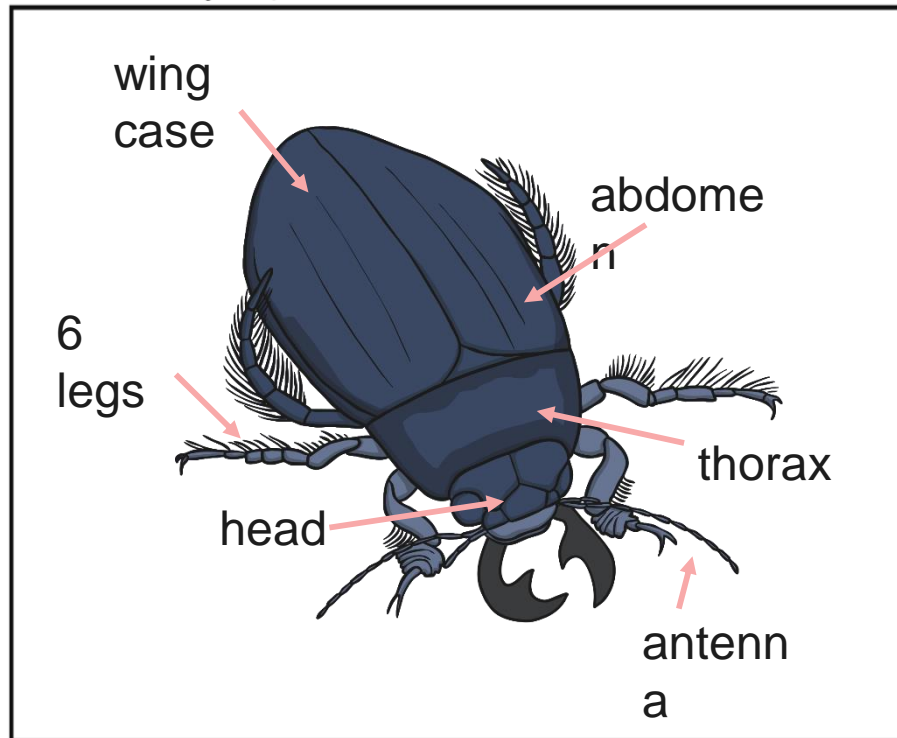


Identifying Invertebrates



Now it is time to identify your specimen!

Draw a labelled diagram of the invertebrate.



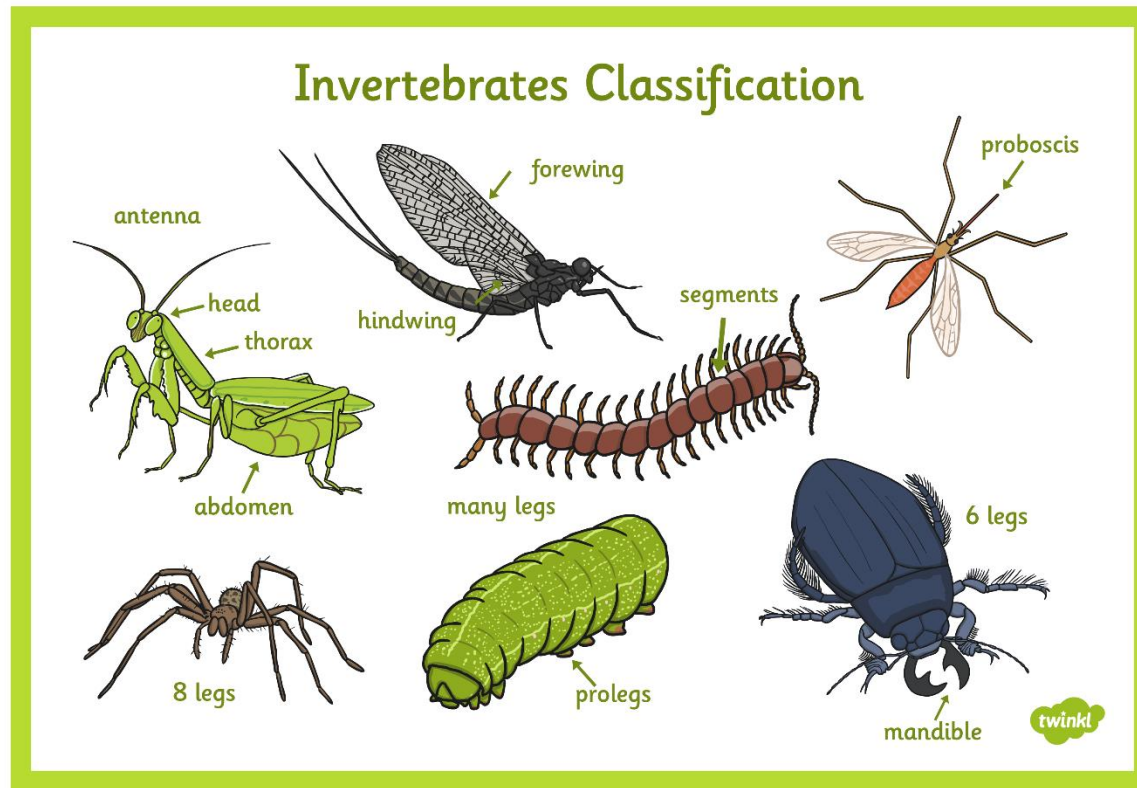
NAME OF INVERTEBRATE:
beetle

HABITAT WHERE IT WAS FOUND: leaf litter

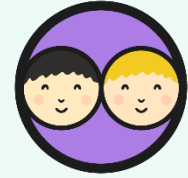
CHARACTERISTICS: this invertebrate has 6 legs, a body in 3 parts and a hard wing case. It has antenna. It does not have pincers on its tail.

HINT: to find out the characteristics of your specimen, look at the Invertebrates Classification Key to see the questions you have used to identify it.

Identifying Invertebrates



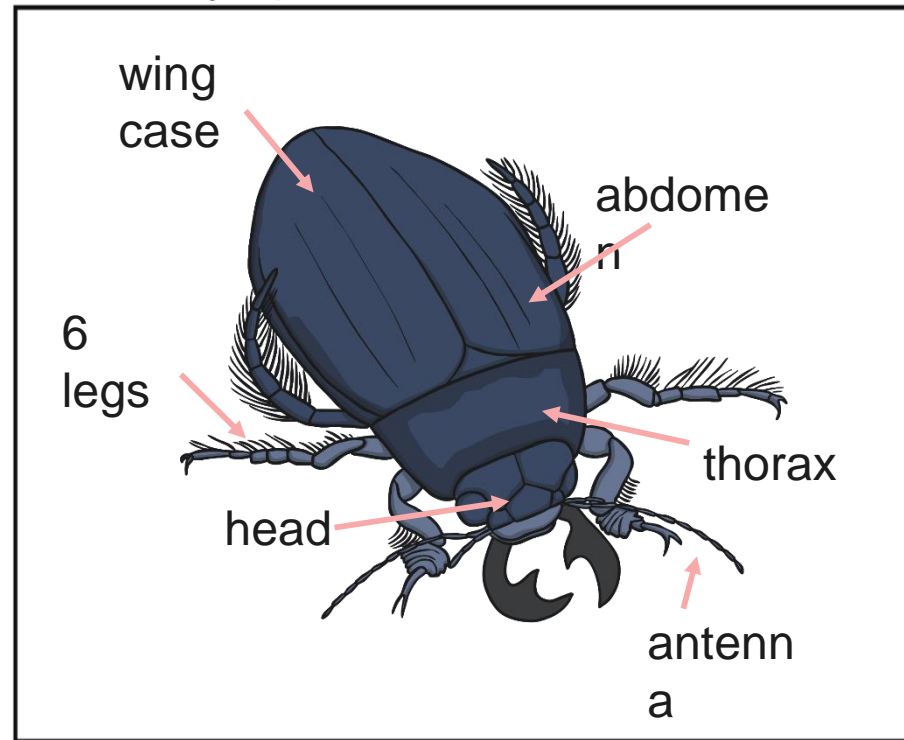
How Do You Know?



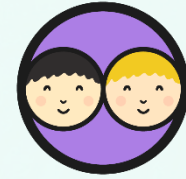
How did you identify your specimen?

Use the Invertebrate Identification Key and the diagram of your specimen to show your partner how you found out what your invertebrate is called.

Draw a labelled diagram of the invertebrate.



How Do You Know?



Invertebrates Classification Key

