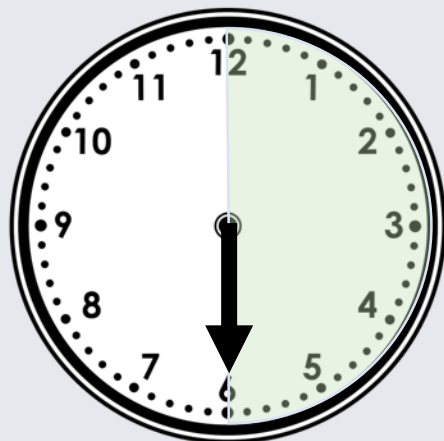
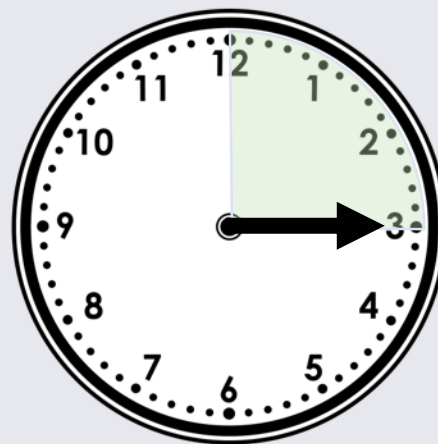


Time: Quarter past
and quarter to.

Friday 5th June 2020.

Use the position of the minute hand to help you label each clock.



quarter past

quarter to

half past

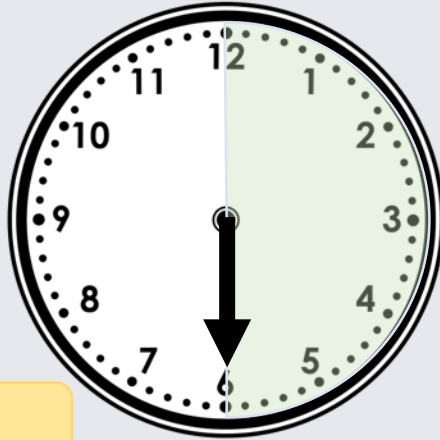
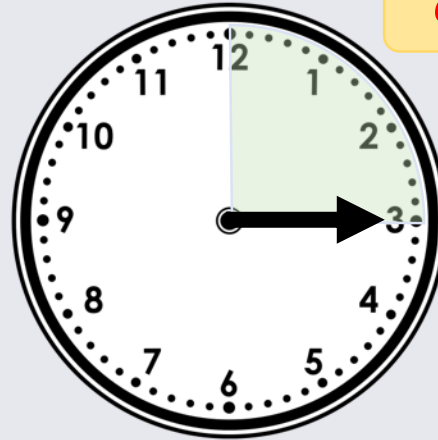
o'clock

Use the position of the minute hand to help you label each clock.

o'clock



quarter past

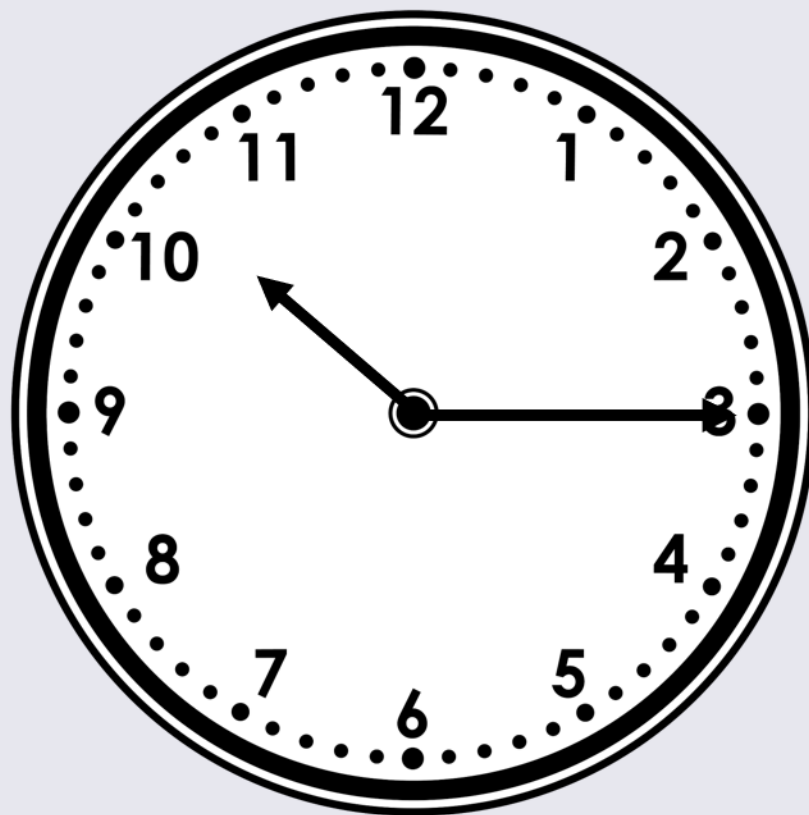


half past



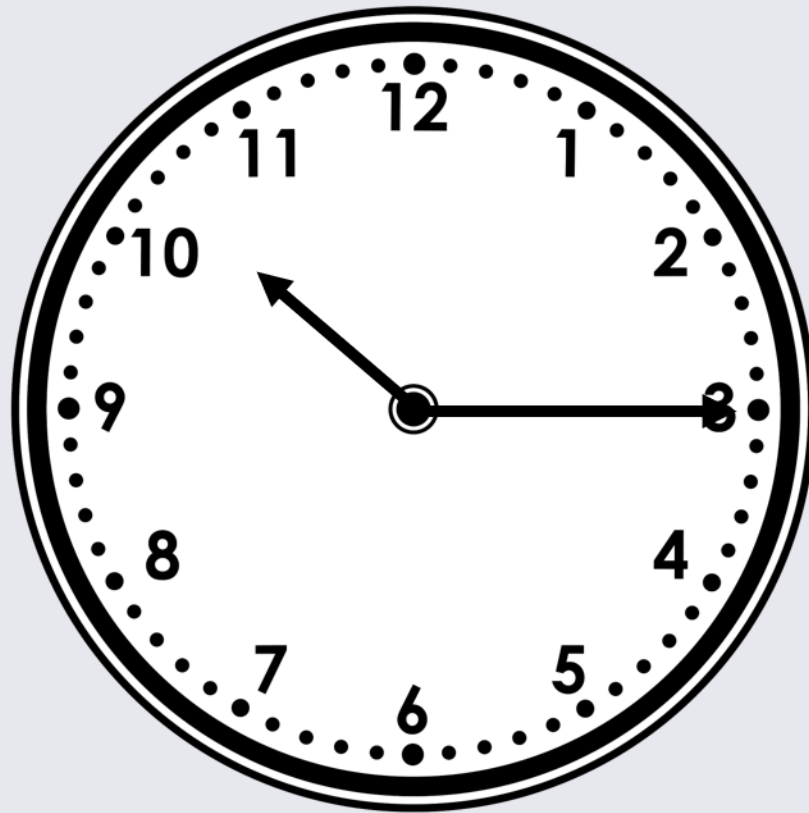
quarter to

Write the time shown on this clock.

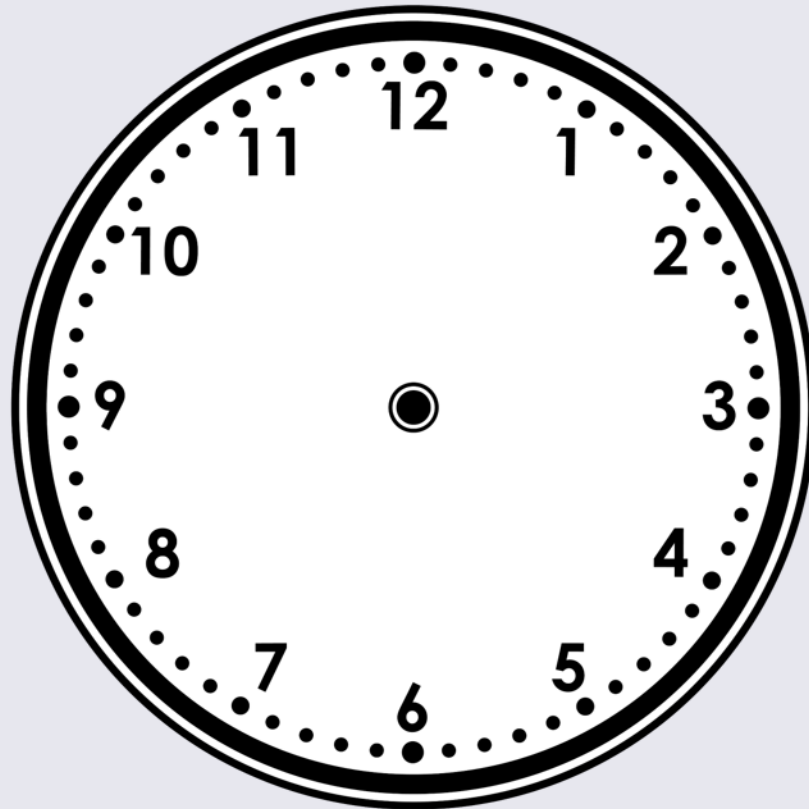


Write the time shown on this clock.

Quarter past 10

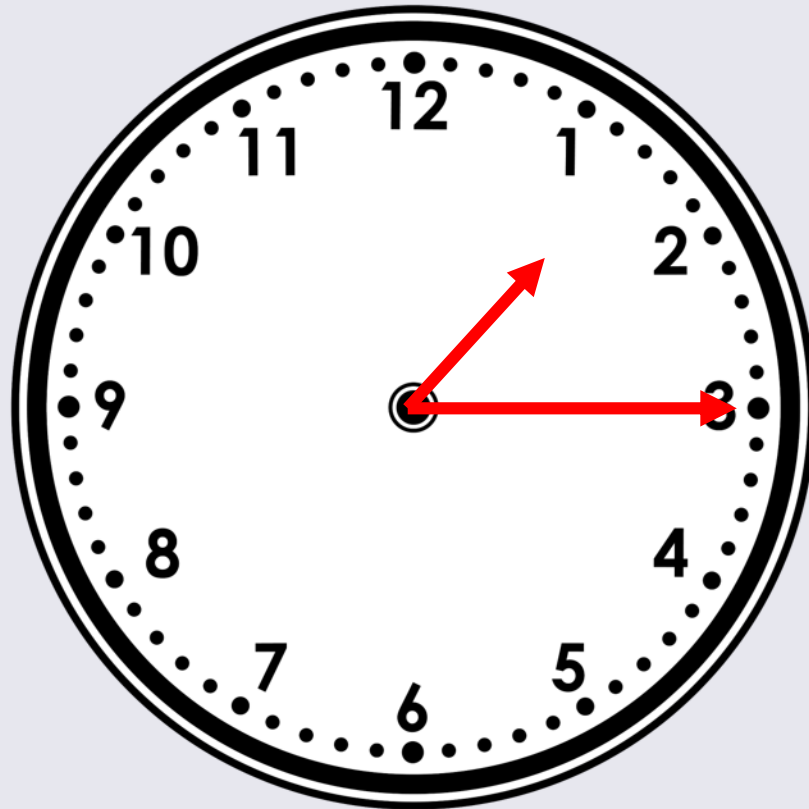


Draw the missing hands on the clock so that it shows the correct time written beneath it.



Quarter past 1

Draw the missing hands on the clock so that it shows the correct time written beneath it.

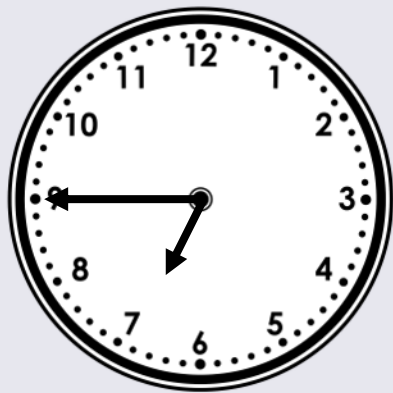


Quarter past 1

Draw a line to match the clocks to the correct written time.



Quarter past 3



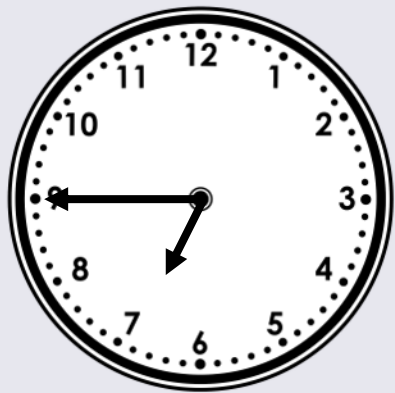
Quarter to 7

Quarter past 12

Draw a line to match the clocks to the correct written time.



Quarter past 3



Quarter to 7

Quarter past 12

Draw where the minute hand will be in 15 minutes time
(a quarter turn).



Half past 10



Quarter to 11



8 o'clock

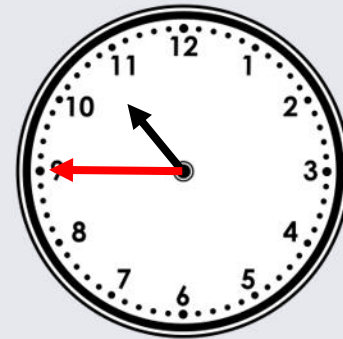


Quarter past 8

Draw where the minute hand will be in 15 minutes time
(a quarter turn).



Half past 10



Quarter to 11

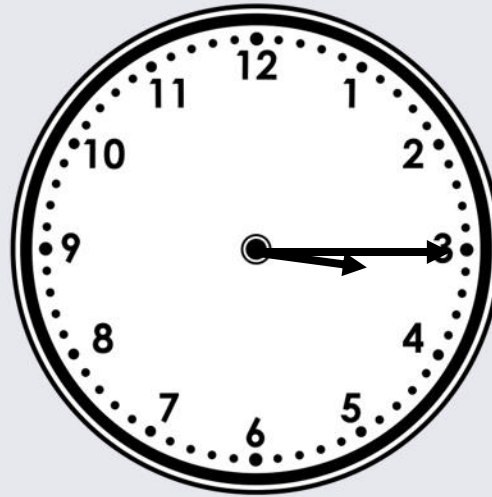


8 o'clock



Quarter past 8

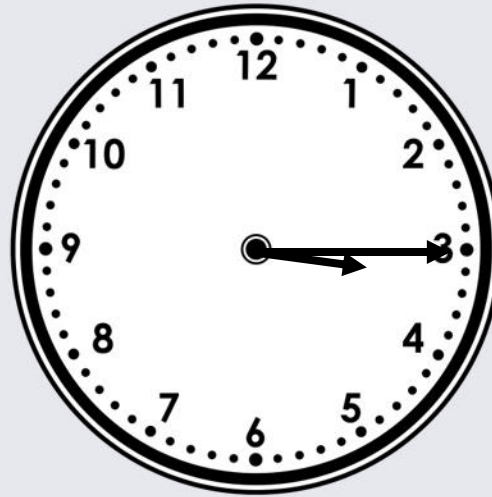
Mark is trying to tell the time.



In quarter of an hour it will be half past 3.

Is Mark right? How do you know?

Mark is trying to tell the time.

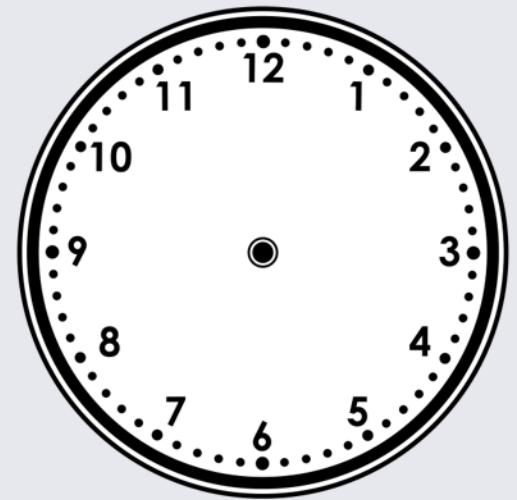
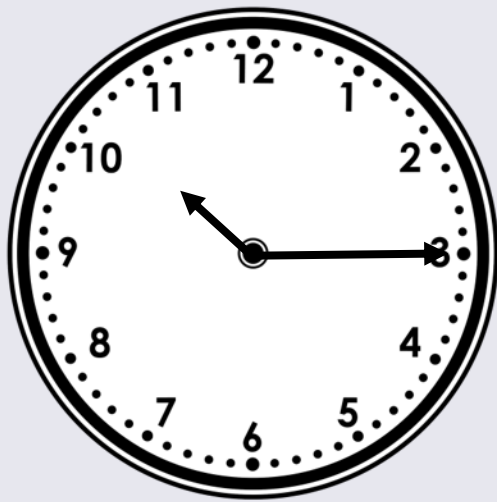


In quarter of an hour it will be half past 3.

Is Mark right? How do you know?

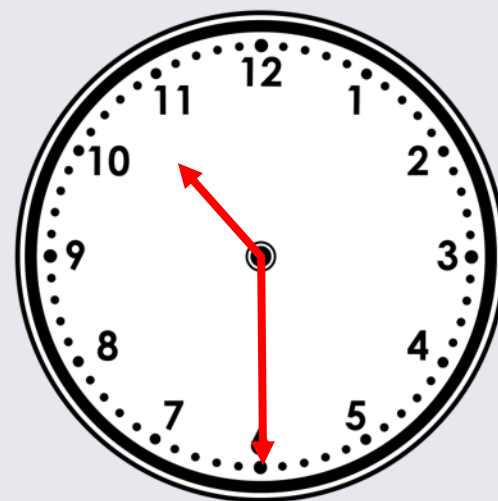
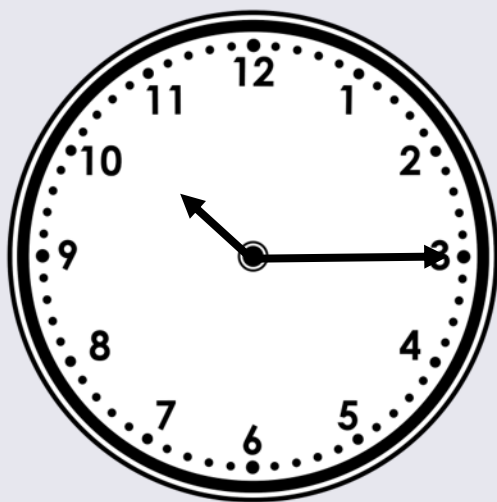
Mark is right because the time shown on the clock is quarter past 3.

Breaktime is 15 minutes long. What time would it finish if it started at the time shown on the clock?



Draw the hands and write the answer.

Breaktime is 15 minutes long. What time would it finish if it started at the time shown on the clock?

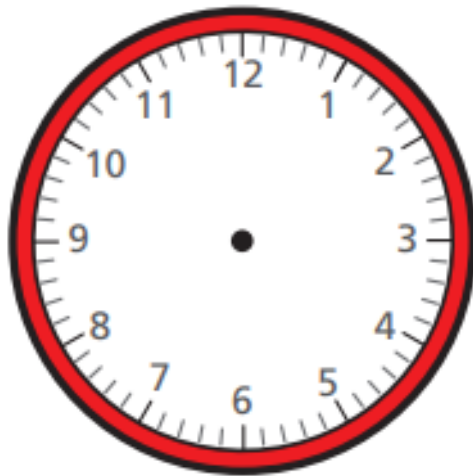


Draw the hands and write the answer.

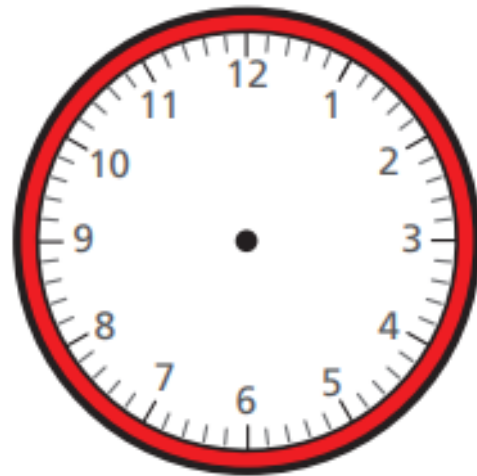
Half past 10

Independent task 1:

Draw hands to show the time on each clock.



quarter past 11



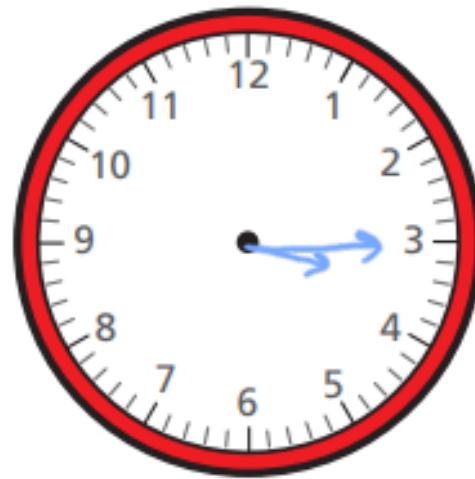
quarter past 3

Independent task 1:

Draw hands to show the time on each clock.



quarter past 11



quarter past 3

Independent task 2:

Match the clocks to the times.



quarter
past 1



quarter
past 12



quarter
past 9



quarter
past 5

Independent task 2:

Match the clocks to the times.

The image shows a matching exercise. On the left, there are four analog clocks. On the right, there are four boxes containing time descriptions. Blue lines connect each clock to its corresponding time description.

Clock	Time Description
Top clock: Hour hand between 4 and 5, Minute hand at 3 (4:15)	quarter past 12
Second clock: Hour hand between 10 and 11, Minute hand at 3 (10:15)	quarter past 9
Third clock: Hour hand at 12, Minute hand at 3 (12:15)	quarter past 5
Bottom clock: Hour hand between 1 and 2, Minute hand at 3 (1:15)	quarter past 1



End of PowerPoint!



Well done!

