

Wednesday 3rd February 2021

LI: To infer how characters might feel
and why

Watch The Lighthouse film from 2 minutes and
13 seconds 2:13) until the end.

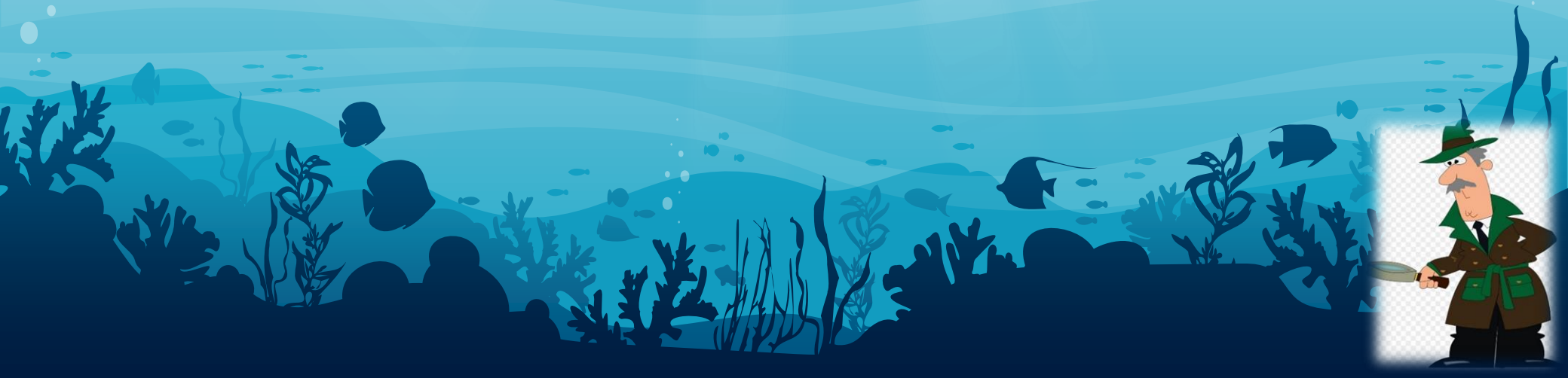
Ask an adult to help you if you get stuck finding
the right place.



Retrieve

What does the Lighthouse Keeper see as soon as he opens the door?

Where do all of the people stand?



Interpret/Infer

Where have all these people come from?

Why do you think the people are all standing together like this?

Has the plan worked? How do you know?





Infer

How do you think feelings between the Lighthouse Keeper and the villagers might have changed from the start of the film to the end?

You can either imagine you are writing this from the point of view of a villager, OR the Lighthouse Keeper.

P

At the start of the film I think the Lighthouse Keeper/villagers thought that..... But at the end of the film, I think...

E

I think their feelings changed, because...

Extra challenge: Write it from both points of view.

