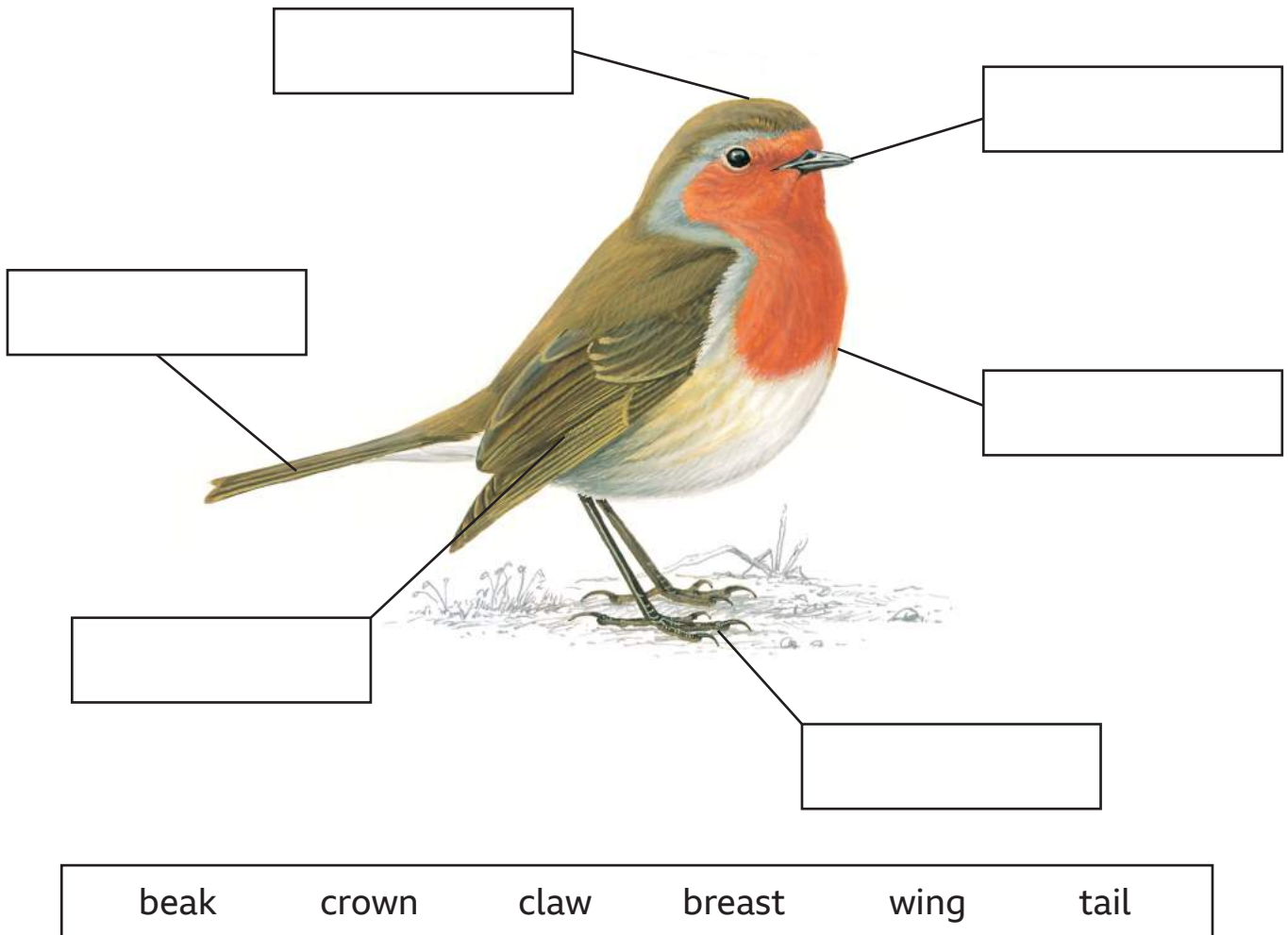


Starter activity

Can you label this bird?



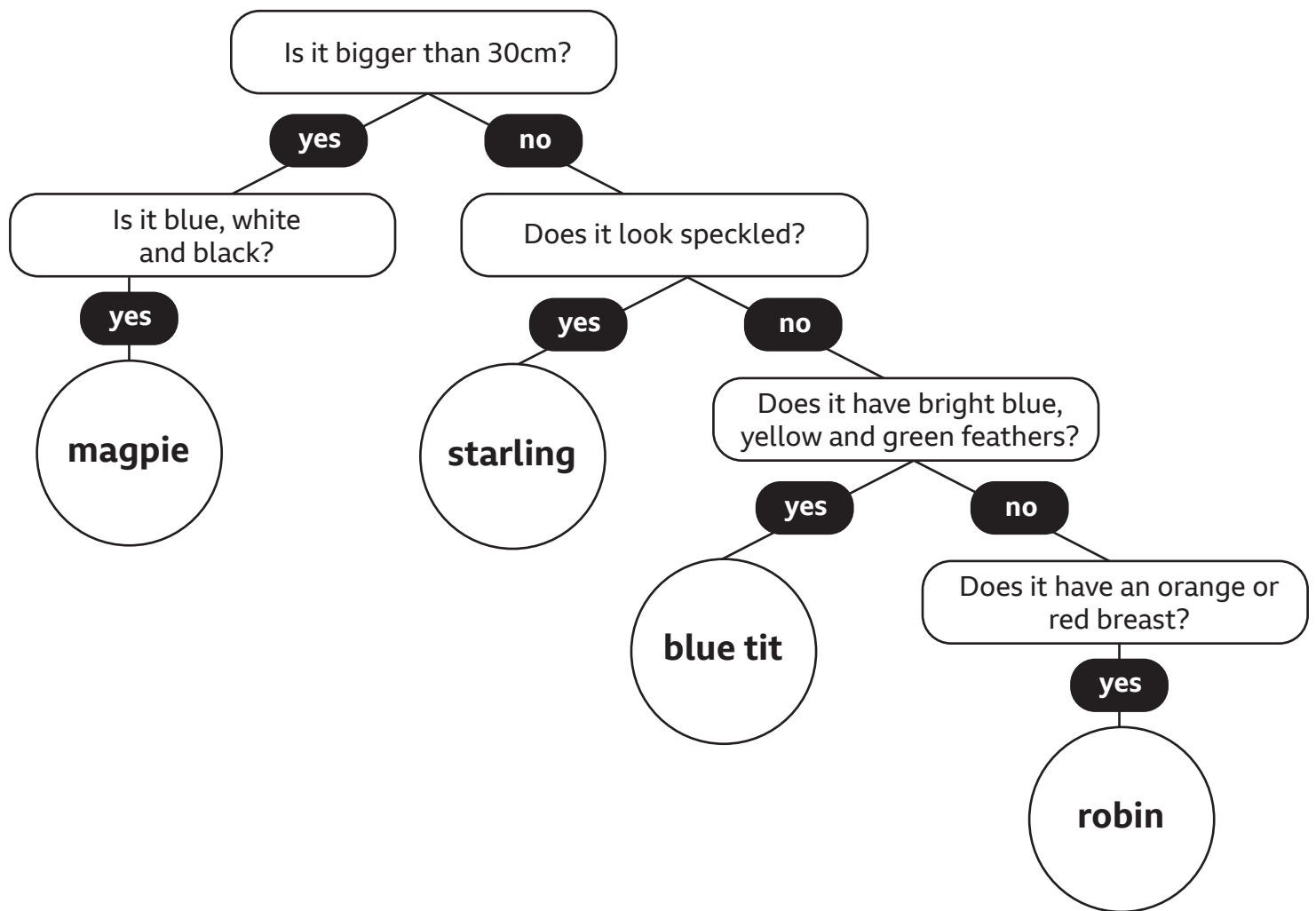
Classification keys

A key is a set of questions about the characteristics of living things.

You can use a key to identify a living thing or decide which group it belongs to by answering the questions.

Can you use the key on the next page to try and identify four commonly seen garden birds?

Use the fact files on the page and the videos from the Live Lesson to help you.



Size: 45cm

Habitats: Woods, parks, gardens, farms, moors and towns.

This bird is a:



Size: 21.5cm

Habitats: Woods, grassland, farms and towns.

This bird is a:



Size: 11.5cm

Habitats: Woods, parks, gardens, towns and cities.

This bird is a:



Size: 14cm

Habitats: Woods, gardens, parks and farms.

This bird is a:

Data handling - Bar charts

Can you answer the questions using the bar chart below?

How many starlings were spotted?

Two types of birds were spotted the same number of times.
Which were they?



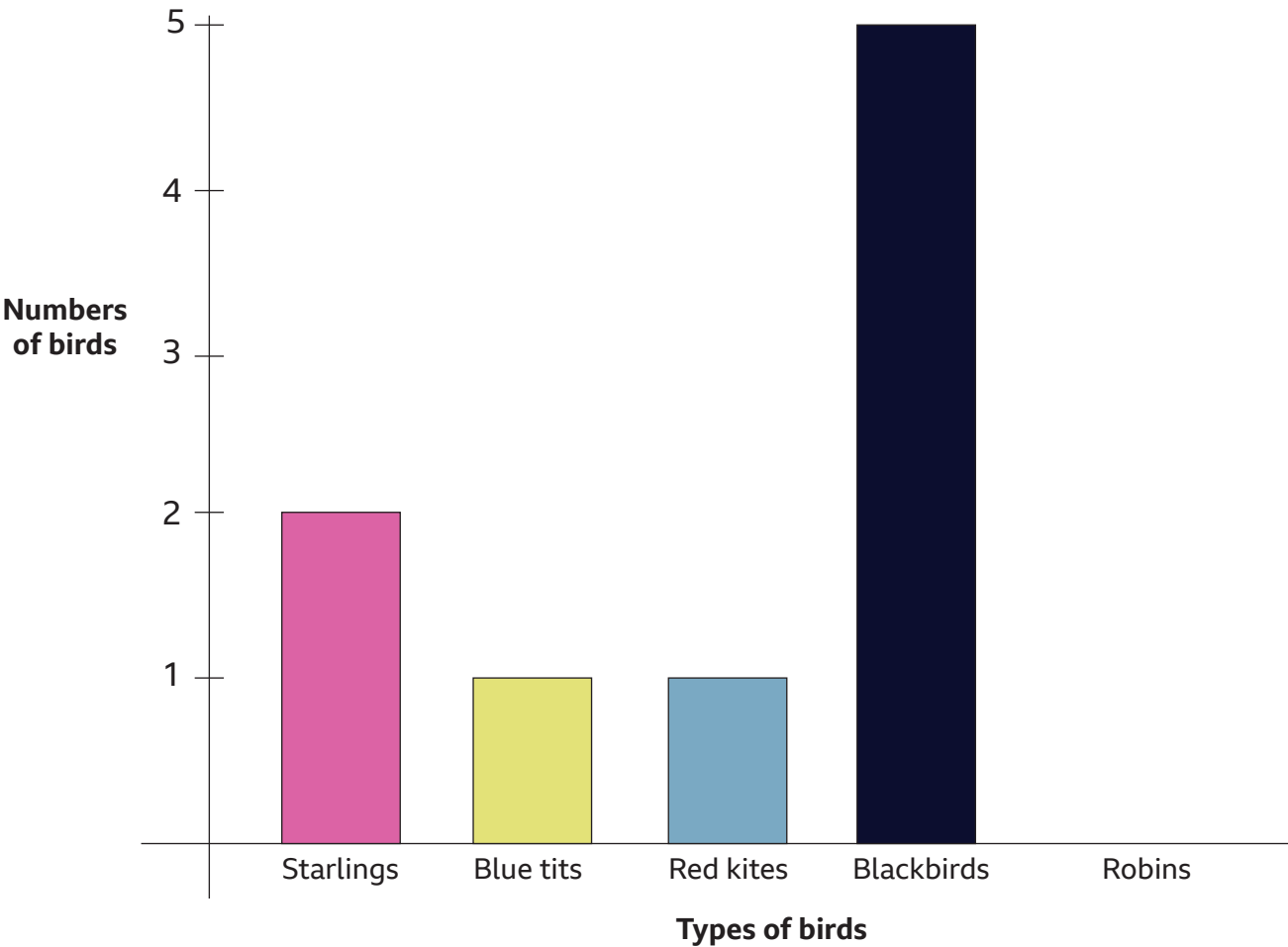
How many robins were spotted? Can you draw the number in the bar chart?

- Clue 1:** There were fewer robins spotted than blackbirds.

Clue 2: The number of robins spotted is more than the sum of blue tits and red kites.

Clue 3: The number of robins spotted is equal to two of the other groups of birds added together.

Birds that were spotted



Glossary

habitat - the place where a living thing lives

identify - to recognise a particular person or thing

bar chart - a chart or graph that presents data or information using bars of different lengths

axis - a reference line that is used on graphs and grids